

Calmark offers the advance design Series 260 "Card-Lok" retainer for cold plate/heat exchanger applications. This totally unique design incorporates design advancements that provide increased thermal transfer, easy insertion and lighter weight. Conforms to DSCC 89024.

### FEATURES

- Maximum uniform clamping force
- Increased thermal transfer
- Maintains wedge and body alignment for easy insertion
- Captivated rear wedge
- Choice of screw head style
- Dimensionally compatible with Series 225 & 245
- Lighter weight
- Special lengths, finishes or other design options available on request

### WEDGES & SHAFT

#### Material:

Aluminum Alloy 6061-T6, ASTM-B221

#### Finish:

See Part Number Code

### SCREW, LOCK & FLAT WASHER

#### Material:

300 Series Stainless Steel

#### Finish:

Passivate per Mil-S-5002

### ROLL PIN

#### Material:

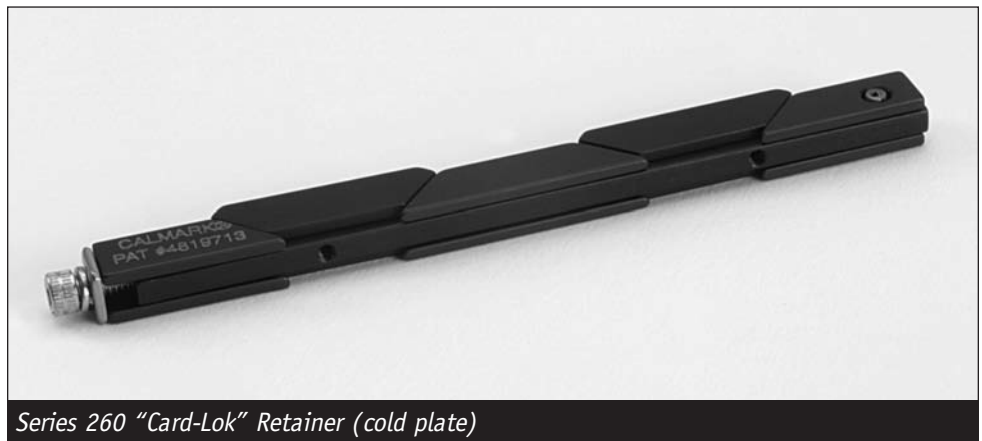
400 Series Stainless Steel

#### Finish:

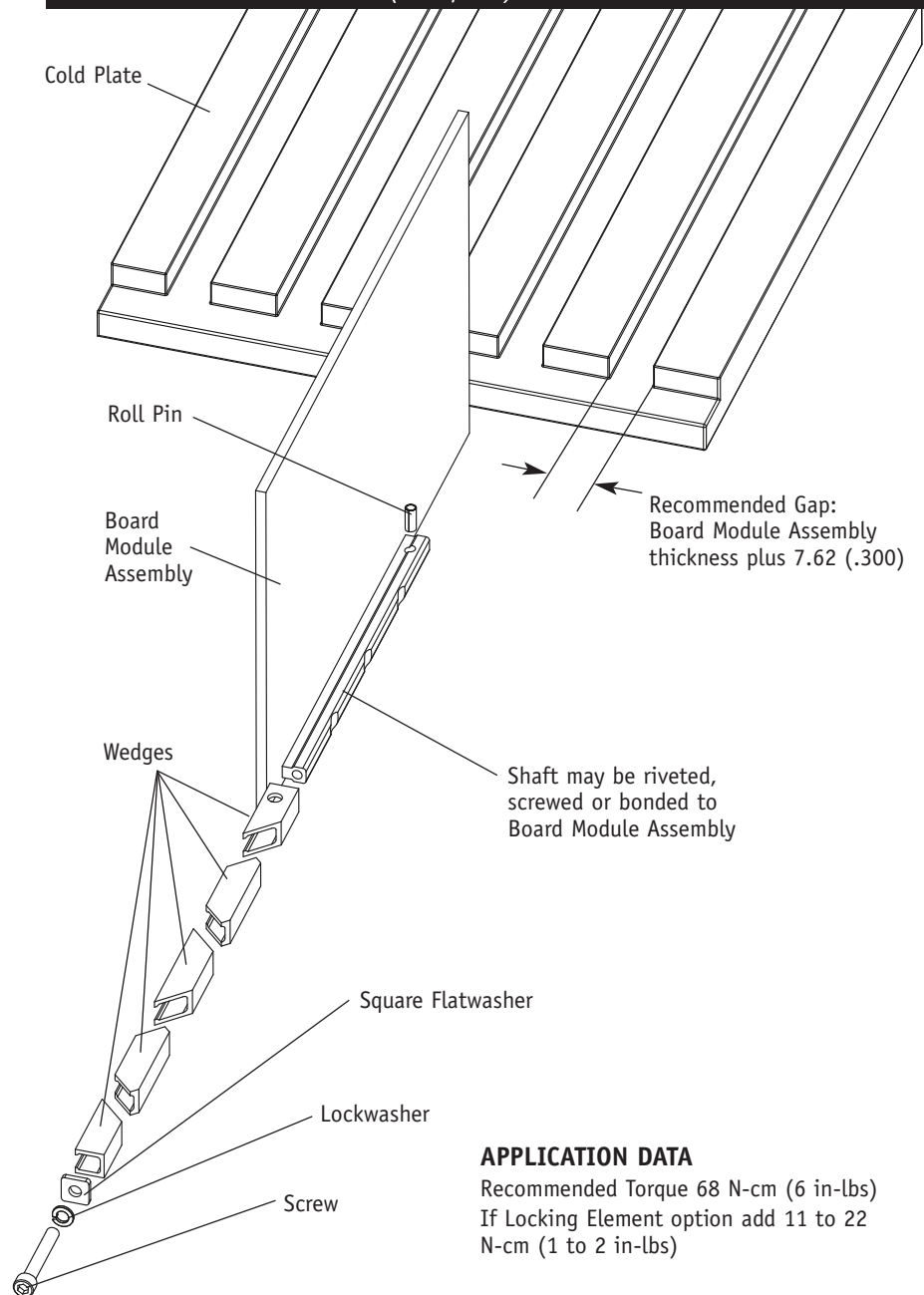
Passivate per Mil-S-5002

### WEIGHT

.95 g/cm (.085 oz/in)



Series 260 "Card-Lok" Retainer (cold plate)



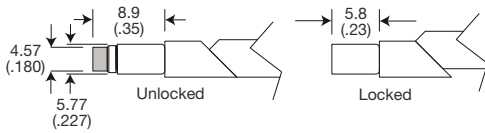
### APPLICATION DATA

Recommended Torque 68 N-cm (6 in-lbs)  
 If Locking Element option add 11 to 22  
 N-cm (1 to 2 in-lbs)

## OPTION PREFIX

### Detail "V"

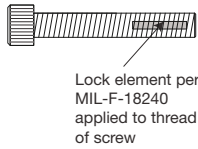
Provides visual lock indication.



## OPTION SUFFIX

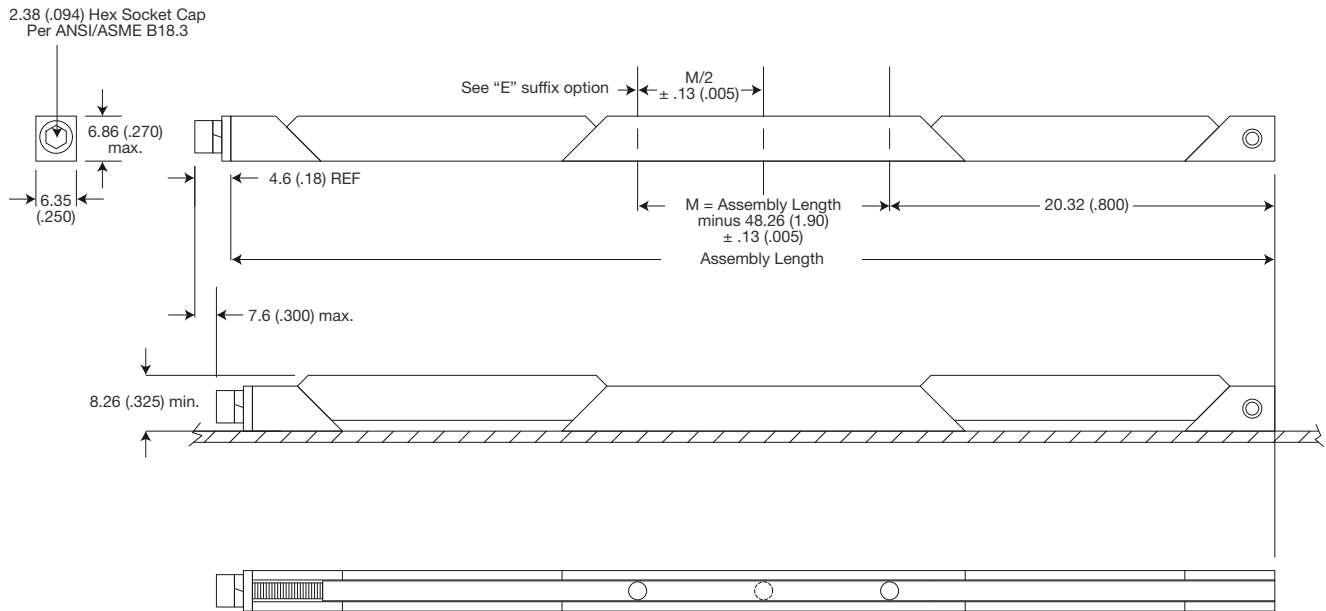
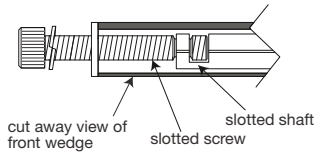
### Detail "L"

Provides prevailing torque for resistance to loosening from shock and vibration.



### Detail "K"

Prevents the unintentional disassembly of screw from front wedge.



Units: mm (in)  
Unless specified otherwise,  
.xx = ± .25, .x = ± .5  
(.xxx = ± .010, .xx = ± .02)

### Part Number Code Series 260 Card-Lok Five Piece

#### Prefix options

Metric Screw Head M2.5 Hex Drive      M  
Standard Screw Head 3/32 Hex Drive      [blank]  
Visual Indicator      V  
No Visual Indicator      [blank]  
Black Anodize      A  
or choose from Finish Table      see table

#### Suffix options

Assembly length from 54.6 (2.15) to 329.9 (12.99)      length.xx  
Preferred lengths are 71.12 (2.80), 96.52 (3.80) and 121.9 (4.80)  
Other lengths available upon request  
Additional Center Mounting Hole      E  
None      [blank]  
Mounting Options - through mounting holes      H  
or choose from Mounting Option Table      see table  
Lock Element      L  
None      [blank]  
Captive Screw      K  
None      [blank]

### Part Number Code Example:

MVA260-3.80ET2LK

Series 260 Card-Lok five piece 96.52 (3.80) long black anodized with M2.5 hex drive, visual indicator, three mounting holes tapped for 2-56 thread, locking element and captive screw feature.

#### Code

Letter Finish

Code	Finish
[blank]	Chemical Film per Mil-C-5541 Class 3, Gold
"R"	Chemical Film per Mil-DTL-5541 Class 3, Type II, Clear
"A"	Black Anodize per Mil-A-8625 Type II, Class 2
"HA"	Hard Black Anodize per Mil-A-8625 Type III, Class 2
"EN"	Electroless Nickel per Mil-C-26074 Class 4, Grade B, Bright

#### Code

Letter Method

Code	Method
"H"	Ø1.73/1.85 (.068/.073) dia. through holes countersink 100° x 1.50 (.060) deep
"TO"	0-80 tapped hole
"T2"	2-56 tapped hole
"TM2"	M2 x 0.40 tapped hole
"TM2.5"	M2.5 x 0.45 tapped hole